

# Meet and Greet



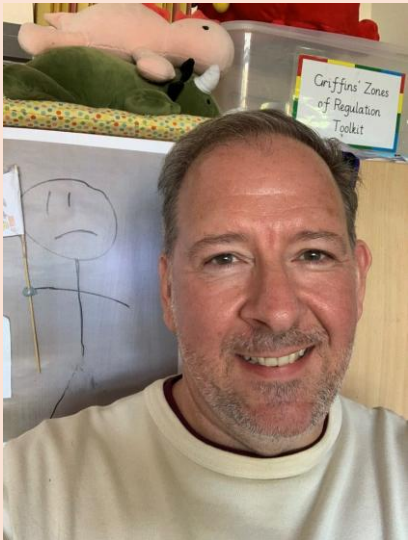
September 2025

# Year 4 Team

## Y4 Jaguars

Teacher: Mr Buckeridge

SNA: Ms Featherstone



## Y4 Leopards

Teacher: Ms Binger

SNA: Ms Couldridge (AM)

TA: Ms Jovic (PM)



# Tetherdown Values

Where *happy* children  
are *inspired* to be  
the *best* they can be.

- Lead with **Kindness**
- Showing **Respect**,
- Igniting **Imagination**
- Embracing **Inclusion**
- Building **Resilience**,
- Firing **Ambition**.

# School Development Focus for this year (links to our fundraising with Friends of Tetherdown)

- OPAL – understanding different play and biodiversity of our school grounds
- Oracy – Voice 21 with an aim to develop skills in successful discussion, inspiring speech and effective communication skills
- Arts – Design Technology, Art and Music
- Community links – giving back to community
- Computing skills to help every child – whether they need extra support, are learning English, or need extra challenge – by giving them tools that match their needs and help them shine.

# Our Rules



Relationships, clear routines and expectations are at the centre of all we do.

Rewards include:

- Golden tickets including weekly raffle
- Marbles
- Recognition board
- Headteacher's hot chocolate
- BBB certificates

Consequences are based around natural consequences and practice something.

Steps for managing tricky behaviour in the classroom:

- Reminder
- Warning
- Last chance
- Cool off time
- Thinking sheet

See our behaviour policy for managing more serious behaviours

# Drop off and Pick up



Start time: 8.50

**(Gates open between 8.30-8.55)**



Children are marked in as an unauthorized late at 8.55am



Gate: Upper Playground – to line up at letter

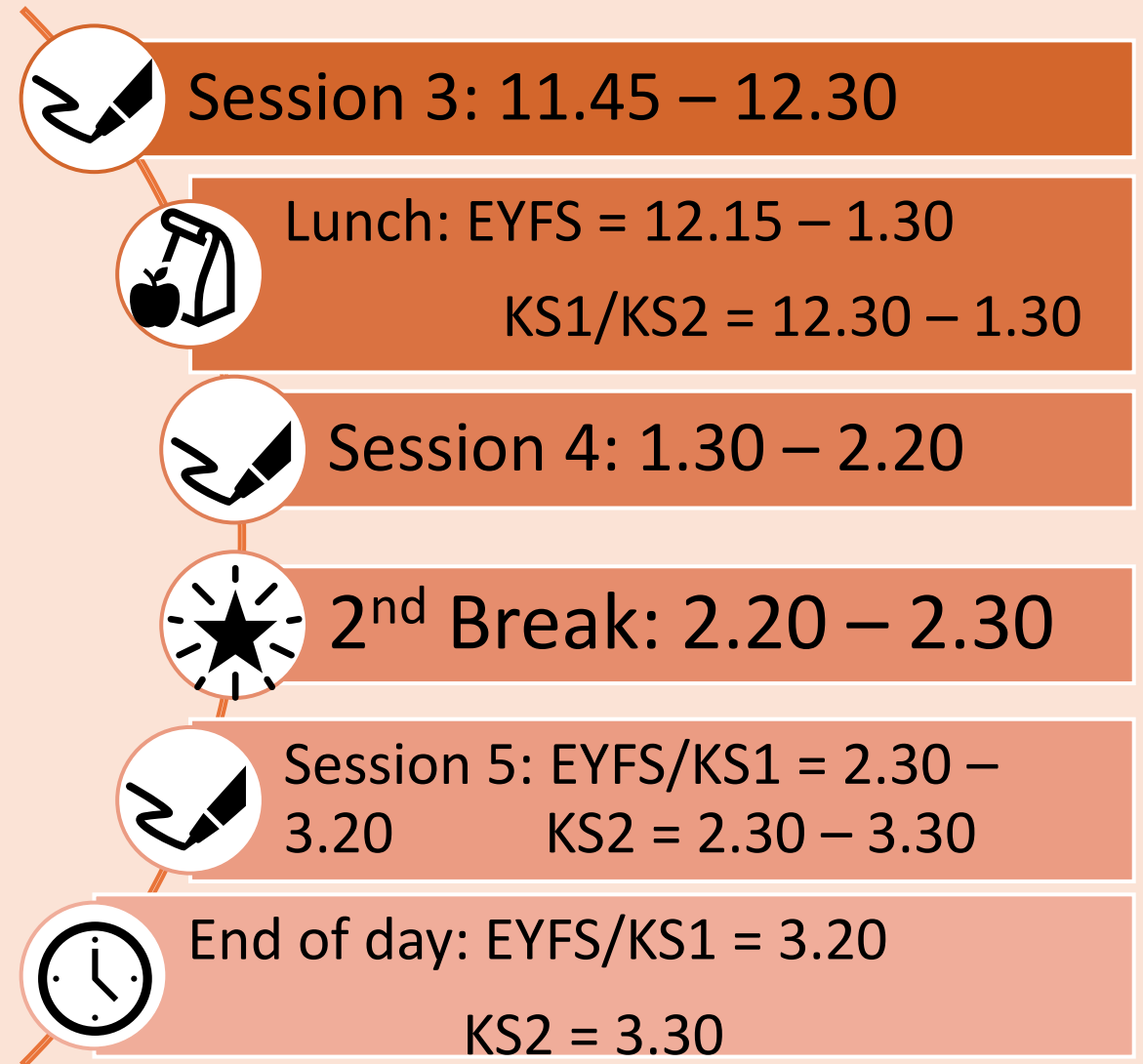
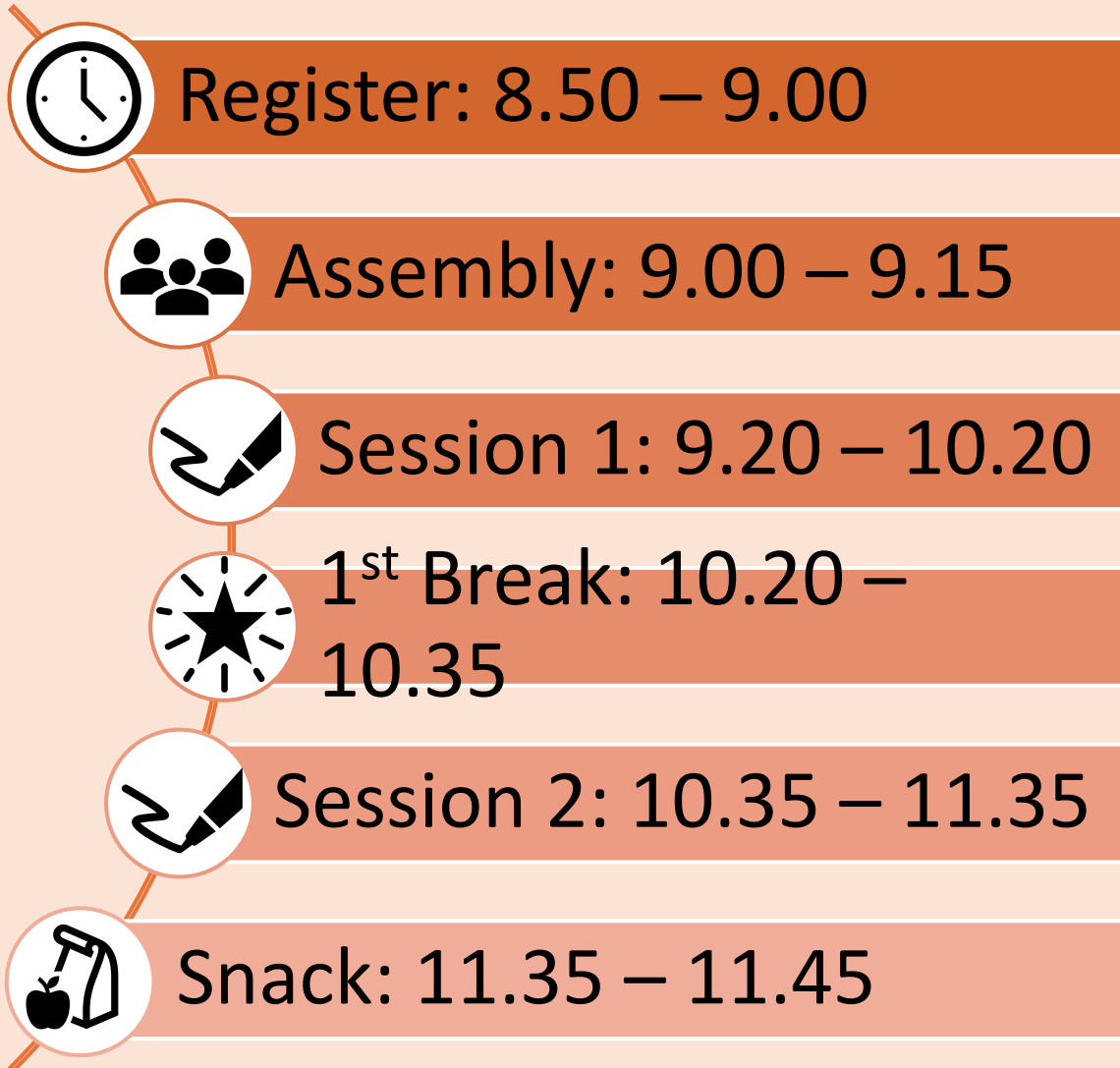


End time: 3:20 (EYFS & KS1)  
3.30 (KS2)

## Adults in the Playground: Health & Safety Guidelines

- 1. Pet Policy:** Please ensure dogs remain off the ground.
- 2. Scooter Safety:** Kindly prevent children from riding scooters.
- 3. Climbing Frame Restrictions:** The upper playground's climbing frames are off-limits for all children.
- 4. Playing Safely:** No ball games or running around
- 5. Children should not be left unaccompanied before 8:50am in the playground.** Only independent travelers may stay unaccompanied.

# School day



# Assemblies:

Monday	Tuesday	Wednesday	Thursday	Friday
Senior Leader Assembly	Singing Assembly	Community (our art inspiration) Play Assembly	Achievement (Be the best you can be) Assembly	Class/Year Assembly



# Snacks:

Please make sure that your children have a hearty breakfast as snack isn't until 11:35am.

Please provide them with either a piece of fruit, vegetable or crackers for them to eat.



# What to bring:

- Small backpack – we are limited on space so please bear this in mind.
- Named water bottle.
- Name any jackets or coats and blue PE jumper.
- PE jumper and trainers for our PE days (Monday and Thursday)



# Year Overview: Curriculum Map

2025-2026	Autumn 1	Autumn 2	Spring 1	Spring 2	Summer 1	Summer 2
<b>Subject Lead</b>	<b>Geography</b>	<b>Science</b>	<b>History</b>	<b>English</b>	<b>History</b>	<b>Geography</b>
<b>Topic Theme</b>	<b>Brazil</b>	<b>Sustainability</b>	<b>Romans</b>	<b>Romans</b>	<b>Anglo-Saxons &amp; Vikings</b>	<b>Alexandra Park and Palace</b>
<b>Key Texts</b>	Up the Canopy	The Explorer The Kapok Tree	Escape from Pompeii	Roman Non-fiction texts	Beowulf	Kensuke's Kingdom
<b>English Writing</b>	To Inform: Animal fact- file  To Inform: Rainforest <a href="#">Mesothelological</a> report	To Entertain: Setting Description  To Persuade: Formal letter	Whole school writing project  To Inform: Diary of a Roman soldier	To Entertain: Chaptered story (8 chapters)	To Entertain: Performance Poetry	To Persuade: Balanced argument
<b>Maths (WRM)</b>	Place Value Addition and subtraction	Area Multiplication and division A	Multiplication and division B Length and perimeter	Fractions Decimals A	Decimals B Money Shape	Position and direction Time Statistics
<b>Science</b>	<b>Enquiry:</b> What's the same/different about living things?	<b>Enquiry:</b> What's in a circuit? STEM Project	<b>Enquiry:</b> How do materials change between solid, liquid, and gases?		<b>Enquiry:</b> What do our bodies do with the food we eat? Dentist visit	<b>Enquiry:</b> How do we hear sounds?
<b>History</b>			<b>Enquiry:</b> How did the Romans build such a powerful empire?	<b>Enquiry:</b> How did the Romans maintain control over Britain?	<b>Enquiry:</b> What impact did the Anglo-Saxons and Vikings have on British society?	
<b>Geography</b>	<b>Enquiry:</b> What is <a href="#">life like</a> in Brazil?	<b>Enquiry:</b> Why does the Amazon matter? Deforestation, Carbon <a href="#">footprint</a> , food miles				<b>Enquiry:</b> Do we need parks?
<b>RE (Discovery RE)</b>	<b>Enquiry:</b> How special is the relationship Jews have with God?	<b>Enquiry:</b> What is the most significant part of the Nativity story for Christians today?	<b>Enquiry:</b> How important is it for Jewish people to do what God asks them to do?	<b>Enquiry:</b> Is forgiveness always possible for Christians? Shrove Tuesday	<b>Enquiry:</b> What is the best way for a Jew to show commitment to God?	<b>Enquiry:</b> Do people need to go to church to show they are Christians?
<b>Art (CUSP)</b>	Drawing skills Exploring materials Composition, focal point, form		Printmaking and textiles 3D art and collage Figures and form		Painting Exploring materials and applying technique	

# Curriculum

## Curriculum Maps:

- Visit the school website to find out what units will be covered over the year.
- [Tetherdown School - Y1-6 Curriculum Maps](#)
- Curriculum Letters:
- Emailed each half term (also available on the school website)
- Contain more detailed information about what will be taught in a particular half term.
- [Tetherdown School - Upper Phase \(Y3 - Y6\)](#)

# Highlights of our Curriculum

- We aim to have at least one visit/workshop per half term.
- Letters and any payments, will be sent out in advance via ParentPay.
- We welcome adult help when possible – email sign ups will be sent out via ParentPay.



## Projects/Creative opportunities

- History - Roman Project Exhibition
- Music - Learning the Ukulele!



## Trips and workshops

- Alexandra Palace
- Fab Science
- Invaders and Settlers history workshop
- Christmas Trip
- Local Church and Synagogue
- Y4 Residential (details to follow later in the

## Curriculum Topics

- Autumn 1 – Brazil
- Autumn 2 – Sustainability
- Spring 1 – Romans
- Spring 2 – Romans
- Summer 1 – Anglo-Saxons and Vikings
- Summer 2 – Alexandra Palace

# Curriculum Specialists

- Mandarin Teachers - from London Southbank University
- Music - led by Mr Jonathan Kitching
- PE - taught by Coach Sonia Da Silva and Coach Sam Hadari



## How We Challenge Your Child in Every Lesson

At our school, we aim high and believe every child can achieve their best. This can be seen by our results, we are a top London school and we have been sitting in the top 5-10% in the country in reading, SPAG and Maths. Challenge is part of everyday learning:

- **Stretching Thinking**

Lessons are designed to deepen understanding and build confidence. E.g.

- *Maths*: Children solve challenging problems using reasoning and resilience.
- *English*: Pupils write with creativity and purpose, using inference and creating mood.

- **Varied Activities**

We use different tasks and approaches to suit all learning styles.

- **Growth Mindset**

Mistakes are seen as learning opportunities.

- **Supportive Classrooms**

Children feel safe to take risks and try hard things.

- **'Aim High' Days**

Focus on problem solving, teamwork, debates, research, and maths puzzles—developing deeper thinking and curiosity.

# End of year expectations

- Reading book band: Sapphire/ Most children will be free readers
- Other subjects: Children are given a grading of: Greater Depth / Expected / Working Towards / Below (e.g. 1BLW = working at a Year 1 level but they are in a higher year group)
- Assessments through observations, conversations, books, lessons, half termly and termly
- Teacher records assessments once every term based on their assessments
- This is fed back to parents through parent consultations and reports
- The school website shows end of year expectations here: [Tetherdown](#)



# How We Support All Children at Tetherdown: Inclusion, Interventions & SEND Support

- Strong Teaching for Everyone**

All teachers are trained regularly to meet children's different needs, including those with SEND.

- Class Teacher Leads Support**

If your child needs extra help, their class teacher is the first person to support and manage this.

- What Are Monitoring and Learning Plans?**

- Monitoring Plan*: A short-term plan to keep an eye on progress.

- Learning Plan*: A more detailed plan with clear targets if your child needs longer support.

- Extra Help When Needed**

Children may work in small groups or 1:1 for a while, but the aim is always to return to full class learning.

- Getting Expert Advice**

If a child still struggles, we may ask outside specialists to help.

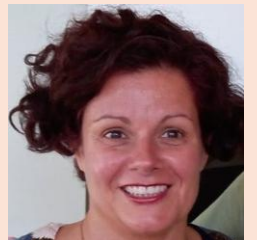
- Keeping Track**

We regularly check progress in meetings to make sure every child is moving forward.

- Who to Talk To**

- Your first point of contact is your **child's class teacher**.

- Ms. McMeakin (Inclusion Lead)** is also available at SEND coffee mornings, Open Door sessions, and parent evenings.



# Home Learning on Teams

Home learning is:

- A consolidation of knowledge and skills such as reading, spelling, and Maths.
- Given to children on Thursdays and returned via Teams Assignments on Tuesdays.

The children will receive a home-learning sheet which will explain the week's learning. Please help your child timetable a time for these activities.

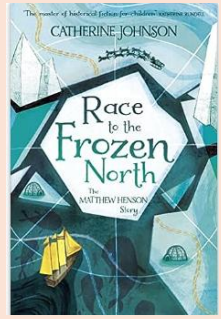
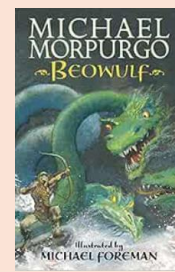
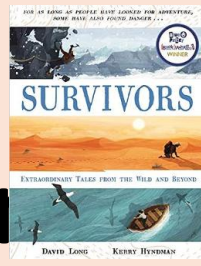
Home learning will include:

- ☐ Daily reading
- ☐ Spellings (20 mins or 5 mins per evening)
- ☐ Maths -TT Rockstars and White Rose Maths (up to 45 mins)
  - ☐ Each sheet has an accompanying video: <https://whiterosemaths.com/homelearning/>

# Home Learning on Teams

- We aim to acknowledge and provide regular feedback about your child's work.
- Home learning is followed up in class and the teachers will continue to train and guide the children on how best to use Teams.
- We will provide a home-learning book for the children to complete their work in and then to take photographs to upload on to teams. If you have an issue with uploading, then please send the work in on the Tuesday.
- A few children will have adapted home learning.
- If you are unable to print, please get in touch with your class teacher who can provide a paper copy.
- **Please read our general notices regularly, this will inform you of assemblies, local trips, workshops and may include other messages of importance.**
- **We expect ALL children to complete their home-learning. If your child does not complete their homework on TWO consecutive occasions we will, for those children in Years 4, 5 and 6: provide an opportunity to complete in school, and we will email you to explore why your child has not completed their home-learning.**

# Reading Passport



Reading Passports were created to widen our children's reading with a range of genres, reading level and choice of authors represented.

- Each year group has 8 books for the children to choose 6 and read over the year. These will be in addition to the children's whole class texts and reading books.
- Books are high level, engaging and at or above reading expectations for that year group
- The books include poetry, non-fiction and fiction.
- Outcome: Children will be asked to write a review of the book once read and submit as part of their home learning on Teams. Each time a child has completed a review of the book, the child can ask the teacher to sign this off on their passport.
- All children who complete their passport before the end of the year will

# Healthy Pupils

## PE days:

- Please come to school in your PE kits on these days: **Monday and Thursday**

**PE Kit:** Tetherdown blue t-shirt or a plain blue t-shirt, sweatshirt, shorts or jogging bottoms and trainers or plimsols

- Please note if your child does not have correct PE kit, they will be given a reminder and if they forget their kit again (same half term), they will miss the lesson due to health and safety. (If they have unsuitable clothing e.g. boots, they may miss the immediate lesson.)
- Stevenson's Website to order PE kits <https://www.stevensons.co.uk/> (also available on Tetherdown Website)
- Friends of Tetherdown hold a second-hand PE kit sale throughout the year. (Summer Fayre)

Please remember we are a **no nut school** E.g. **pesto**

- KS1 during day - School provides the snacks
- Please send in a labelled water bottle.
- Packed lunches - all rubbish from children's packed lunch will remain in lunchboxes and returned home so that you can discuss likes/dislikes.

## Birthdays:

- Please **do not bring edible birthday treats** due to being 'Healthy School' and children's allergies/intolerances. However, we would welcome a book to add to the library.
- Please choose a book that your child has enjoyed reading or speak to the staff at Muswell Hill Children's Bookshop as they will give excellent recommendations.

# Online-Safety



- Parents and staff are responsible for teaching children the skills to use the internet safely. Please see our 'Keeping Children Safe Policy' for more details.
- No mobile phones or watches with mobile data in school.
- Any photographs taken by parents on school trips must not be shared on any social media sites.
- All parents are asked to give/deny permission for photographs to be shared on our website and in our Newsletter.
- The annual Parent E-safety meeting is planned for November 2024
- Consider joining a national movement called **Smartphone Free Childhood-Haringey** which is urging parents and schools to help delay giving young children smartphones and social media access.

# Online-Safety and Safeguarding Guidelines for Parents.

- Consider joining a national movement called Smartphone Free Childhood- Haringey which is urging parents and schools to help delay giving young children smartphones and social media access.
- When considering tutors – be it music or learning – please check their DBS!



# Communication Guidelines

## **Best Practice for Communicating with Teachers:**

- Direct Meetings/Phone Calls: Schedule these for in-depth discussions.
- Emails: Keep messages polite and succinct and send them within working hours. Expect a response within 5 working days. Use "schedule send" for emails written late at night or during the weekend.
- End-of-Day Chats: Brief discussions in the playground are welcome.

## **Key Information Sources:**

- Website: Visit [www.tetherdownschool.org](http://www.tetherdownschool.org) for most queries, supporting our busy office staff.
- Parent Consultations & Annual Reports: Discuss your child's progress.
- Teams: Regular updates on visits and home learning.

**Class Champions: Assist with events and community engagement through FoT.**



# Further Communication

- We have a monthly newsletter, a school website [www.tetherdownschool.org](http://www.tetherdownschool.org) and an Instagram page so please follow us on: tetherdownschool

## When emailing the office:

- **Please write down the child's full name and class in the subject line**
- Reporting your child's absence/illness/medical appointment or general query [admin@tetherdownschool.org](mailto:admin@tetherdownschool.org)
- Any issues around debt or finance please use [finance@tetherdownschool.org](mailto:finance@tetherdownschool.org)
- Any issues with Breakfast Club please use [breakfastclub@tetherdownschool.org](mailto:breakfastclub@tetherdownschool.org)
- Any issues with After School Club please use [afterschoolclub@tetherdownschool.org](mailto:afterschoolclub@tetherdownschool.org)

## **Class Teacher emails:**

- Jaguars:
  - Rory Buckeridge [rbuckeridge@tetherdownschool.org](mailto:rbuckeridge@tetherdownschool.org)
- Leopards
  - Rae Binger [rbinger@tetherdownschool.org](mailto:rbinger@tetherdownschool.org)

# Wrap around Care

- Breakfast Club (7:40am – 8:50am) – if you are interested in a place, please email: [breakfastclub@tetherdownschool.org](mailto:breakfastclub@tetherdownschool.org) Ad hoc bookings are available with at least 24 hours' notice and require confirmation.
- After School Club (M-Th 3:30pm – 6:00pm, F 3:30pm – 5:00pm) - if you are interested in a place, please email: [afterschoolclub@tetherdownschool.org](mailto:afterschoolclub@tetherdownschool.org) Ad hoc bookings are available with at least 24 hours' notice and require confirmation.
- Other available clubs run by both internal and external providers:
- Before School: 8:00am - 8:30am (Choir); 8:20am - 9:10am (Orchestra)
- Lunchtime: 12:30 noon -1:30pm daily (eg Street Dance, Chess, French, Stitch, Debutots)
- After school: 3:30pm - 4:30pm daily (eg Sports with Coaches Da Silva and Hamidi, Jazz, Welly Time, Lego, Karate, Art, Netball, Tennis, Drama, Ballet, Cookery and Gymnastics)
- Please refer to the school website for detailed information: [www.tetherdownschool.org/clubs-and-activity-camps](http://www.tetherdownschool.org/clubs-and-activity-camps)

# Thank you

As always - we thank you for your continued support as we embark  
on  
another exciting year, where we have the highest expectations for  
your children to excel in all they do here at Tetherdown.

Where *happy* children  
are *inspired* to be  
the *best* they can be.