

A decorative vertical bar on the left side of the slide, composed of several overlapping geometric shapes in shades of orange, red, yellow, green, and blue.

Welcome to Tetherdown Reception Meeting 2025-26



Tetherdown
School

Tetherdown Team



- Fiona Moffatt- EYFS Lead, Lower Phase Lead, class teacher for Ladybirds
- Emily Clarkson- Class Teacher for Butterflies and Music Lead
- Sian Bradburn and Emma Swinhoe – Teaching Assistants
- Lisa Robson – Pupil & Parent Contact
- Olive Dining – school catering service
- Friends of Tetherdown – Chairs Jenny Roberts and Barbara Keith

Friends of Tetherdown (PSA) Co-Chairs Jenny Roberts & Barbara Keith



chair@friendsoftetherdown.com

Overview

- Starting school schedule – dates and times
- Home Visits
- Settling into Reception: daily routines, procedures and what to bring to school...
- Curriculum information
- Parent involvement
- Medical and First Aid
- Questions - slides will be sent to you



Starting school schedule



	Monday	Tuesday	Wednesday	Thursday	Friday
Week 1			3rd September Home Visits	4th September Home Visits	5th September Home Visits
Week 2	8th September Home Visits	9th September Home Visits	10th September 9-11.20am Butterflies A Ladybirds A 1- 3.20PM Butterflies B Ladybirds B	11th September 9-11.20am Butterflies A Ladybirds A 1-3.20PM Butterflies B Ladybirds B	12th September 9-11.20am Butterflies A Ladybirds A 1- 3.20PM Butterflies B Ladybirds B
Week 3	15th September All children 8.50-1.20PM (stay for lunch)	16th September	17th September	18th September	19th September
Week 4	22nd September FULL TIME SCHOOL	23rd September 8.50am-3.20pm	24th September	25th September	26th September

Your child has already been allocated a class group A or B. In Week 2 they will attend school for mornings **OR** afternoons only, according to their group. *These groups are the same as your Taster session groups.*



Home Visits

Purpose of Home Visits

To get to know you and your child and for you to get to know us.

Please encourage your child to show us a favourite toy or photo of something special to them.

To discuss concerns, ask questions, share any useful information.

Sign up details:

You will be emailed a link in the next few days which will enable you to sign up for the date you are available for a Home Visit. You can choose a morning or afternoon slot and you will need to keep the whole morning or afternoon free.

Each visit is 10 minutes in duration.



Getting ready for school...



Self care and independence:

Put on and take off coat, outer layers and shoes
Wash and dry hands
Use toilet
Begin to have times when they separate from you
Good sleep and bedtime routine

Eating and drinking:

Use spoon and fork and begin to use a knife
Drink from water bottle and open cup
Try different foods



Speaking and Listening:

Talk about ideas, needs and feelings
Ask an adult for help
Follow simple instructions
Encourage lots of talk!



Playing with others:

Join games and activities with others
Share and take turns
Get used to not always being the winner!



Reading and writing:

Listen to stories and Nursery rhymes
Use pens, pencils, crayons to mark make
Recognise name
Use childrens scissors



Numbers:

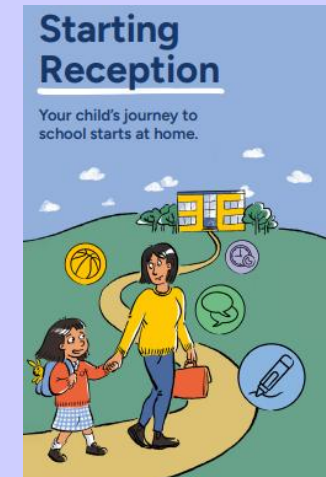
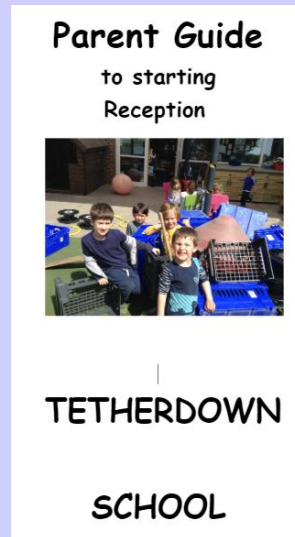
Count a small number of objects
Recognise some numbers
Sing number songs and rhymes



Getting ready!

- Parent EYFS Information Booklet
- Tetherdown guides for parents and children (emailed to you)

[What-to-expect-in-the-EYFS-complete-FINAL-16.09-compressed.pdf \(foundationyears.org.uk\)](https://www.foundationyears.org.uk/What-to-expect-in-the-EYFS-complete-FINAL-16.09-compressed.pdf)



Drop off and pick up routine

Routine for September:

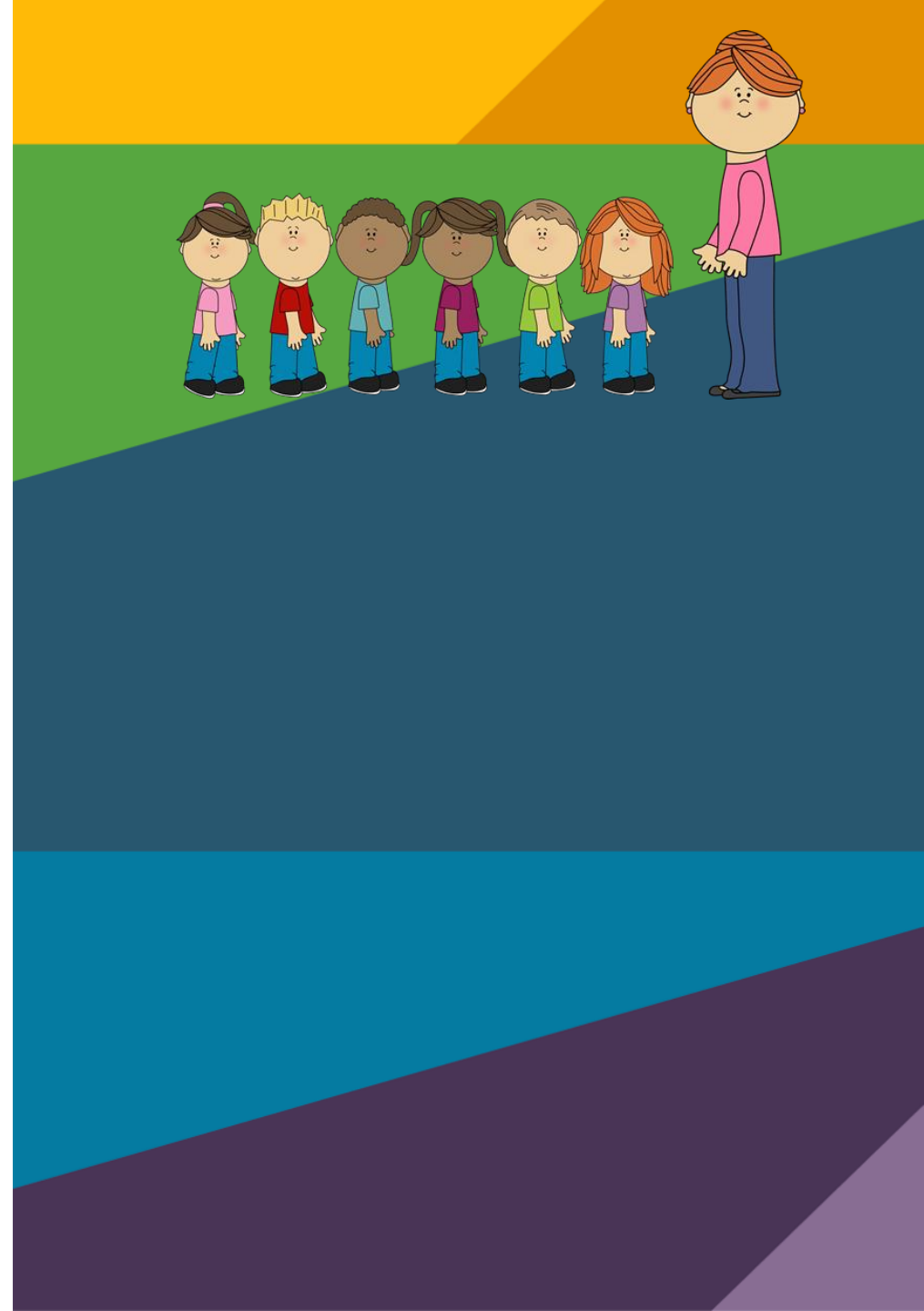
Normal school hours are 8.50-3.20pm.

In the mornings, please wait with your child outside our Reception playground gate. Do bear in mind that this is a public footpath. We will open the gate at 8.50am.

We would like you to say a quick goodbye at the gate before the children enter our playground. Unfortunately, you will be unable to come into the classroom but trust us to reassure and settle your children.

At pick up time, please wait in the Reception playground – we will open the gate at around 3.15pm and we will call the children one by one to be collected when we see their adult. Please make a quick exit from the school premises/pick up older sibling(s).

Please let us know who will be picking up your child. We cannot hand your child over to any person we have not been given authorisation. Inform us in the morning directly or email office if last minute changes occur during the day.





What to bring:

Yellow Book Bag – daily. Available on 'Friends of Tetherdown' on our website. No backpacks!

Drink bottle – daily (pop up NOT screw tops).

PE kit – at this stage they are not needed but we will advise you as soon as possible. Children will wear their PE kit to school on their allocated PE day.

NAMES NAMES NAMES!!!!!!!!!!!!!!

Sensible clothing (no laces, shoes – slip on or velcro, no jewellery, no tight jeans).

Spare set of named clothes in named bag – this will stay in school.



A typical day in Reception



8.50am – Come into school, morning routine, self-register, independent ;learning time or 1:1 reading with an adult

9:20 am – Short activity on the carpet (circle time, maths games or songs, story, phonics etc)

INDEPENDENT LEARNING TIME INDOORS AND OUTDOORS (children are free to choose their own activities, supported and guided by adults)

10:15 am – Tidy up, snack time and story (snack is provided by the school)

10:30am – Playtime outdoors or bikes and scooters time

11:00am – Short activity on the carpet (circle time, maths games or songs, story, phonics etc)

INDEPENDENT LEARNING TIME INDOORS AND OUTDOORS (children are free to choose their own activities, supported and guided by adults)

12:15 am – Lunch time. Children eat in the school hall – most children choose school dinners, rather than bringing in their own packed lunch.



1:30 pm - Short activity on the carpet (circle time, maths games or songs, story, phonics etc)

INDEPENDENT LEARNING TIME INDOORS AND OUTDOORS (children are free to choose their own activities, supported and guided by adults)

2:50 pm – Story/songs/rhymes

3:20pm – Home time. Teachers will release children from the classroom doors only when they see the child's parent or carer.



A decorative background on the left side of the page, consisting of several overlapping triangles and quadrilaterals in various colors: red, orange, yellow, green, blue, and purple.

Clubs:

Breakfast club and Afterschool club are also available to Reception children when they are full time.

We offer some activity clubs at lunchtimes or after school for Reception children. E.g ballet, art club, French and sports activities.

Tetherdown run clubs (sports/breakfast and after school club) are available as soon as the children are full time. The external led clubs will begin from after OCTOBER half term.

Information about all these clubs are on our Tetherdown website and emails have been sent to you so that you can register your interest. You need to email the club directly to determine place availability. They are not managed by the school office.

Curriculum Information

- Reception is part of the Early Years Foundation Stage. We offer a creative, meaningful, play-based curriculum and we provide a balance of child-initiated and adult-led activities. In our planning for learning we are guided by the EYFS 7 Areas of Learning.
- Each term parents are given an overview of the school based learning that will be covered in each of the Reception 7 learning areas (Curriculum Letter). This will be found on our website.
- At the end of the Reception we use the statutory Early Learning Goals as an 'end point measure' of what children have achieved. These goals summarise the knowledge, skills and understanding that children gain by the end of the Reception year. There are 17 goals that relate to the 7 areas of learning.

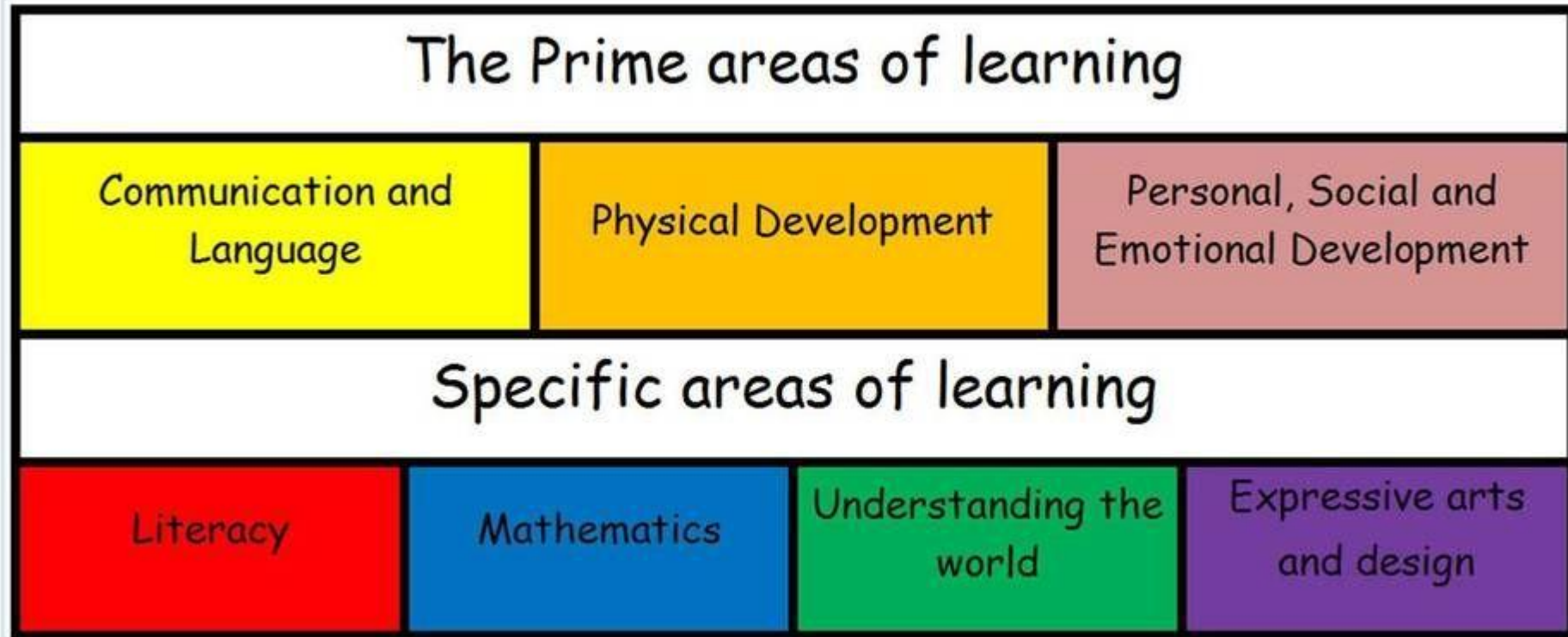


- Play is essential for children's development, building their confidence as they learn to explore, relate to others, set their own goals and solve problems. Children learn by leading their own play, and by taking part in play which is guided by adults. (DfE March 2021)



EYFS: 7 areas of learning

|



Parent Involvement

We welcome parent involvement and encourage a strong link between home and school.



Microsoft Teams



ParentPay

- TRIPS: throughout the year
- PARENT READER: weekly after first half term.
- CONCERNS: we encourage you to make a time to talk to us (the end of the day is better).
- CURRICULUM INFORMATION: related to how we teach maths and literacy and how you can support your child at home
- HOME LEARNING: activities such as reading, phonics and maths will be sent home after the first half term. This is usually posted on our class MICROSOFT TEAM. Passwords and details will be sent home at the beginning of the school year.
- SHARING FOLDERS
- SCHOOL INFORMATION: most can be found on the school website. Core school information is sent home via PARENTPAY. Check yellow bookbags daily.
- CLASS CHAMPIONS: parent/ carer volunteers are an important link between the teachers and the parents. It is a great opportunity to get to know everyone and contribute to our amazing Tetherdown community. Email your class teacher if you are interested in this role. If you have consented to share your contact information with FOT in your admission form, we will share it with the class champions at the beginning of the year.



Medical and First Aid

Qualified Paediatric First-Aiders

Medical forms (HCP)/emergency contacts – keep updated

Allergies – nut free school

Sickness and Diarrhoea – information on the website about when to keep your child at home. 48 hour rule.

Head Bumps

Antibiotics and ad hoc medication in school:

(we encourage doses to be spaced out of school hours)

No non-prescribed medication can be administered in school and prescribed meds needs a form to be completed.



Loving Learning!

Questions

- You may find many of your questions answered within the documentation we will be sending you so please read these thoroughly, in particular the Child and Parent guides. The 'Welcome to Tetherdown Guide' has already been emailed to you.
- This presentation will be emailed to you.
- Don't forget your home visit in September will be the time to ask specific questions about your child.

