

Meet and Greet



September 2025

Year 2 Team

Y2 Eagles

Teacher:

Ms Clarke



Y2 Owls

Teacher:

- Ms McAlister



Tetherdown Values

Where *happy* children
are *inspired* to be
the *best* they can be.

- Lead with **Kindness**
- Showing **Respect**,
- Igniting **Imagination**
- Embracing **Inclusion**
- Building **Resilience**,
- Firing **Ambition**.

School Development Focus for this year (links to our fundraising with Friends of Tetherdown)

- OPAL – understanding different play and biodiversity of our school grounds
- Oracy – Voice 21 with an aim to develop skills in successful discussion, inspiring speech and effective communication skills
- Arts – Design Technology, Art and Music
- Community links – giving back to community
- Computing skills to help every child – whether they need extra support, are learning English, or need extra challenge – by giving them tools that match their needs and help them shine.

Our Rules



Relationships, clear routines and expectations are at the centre of all we do.

Rewards include:

- Golden tickets including weekly raffle
- Marbles
- Recognition board
- Headteacher's hot chocolate
- BBB certificates

Consequences are based around natural consequences and practice something.

Steps for managing tricky behaviour in the classroom:

- Reminder
- Warning
- Last chance
- Cool off time
- Thinking sheet

See our behaviour policy for managing more serious behaviours

Drop off and Pick up



Start time: 8.50

(Gates open between 8.30-8.55)



Children are marked in as an unauthorized late at 8.55am



Gate: Upper Playground – to line up at letter

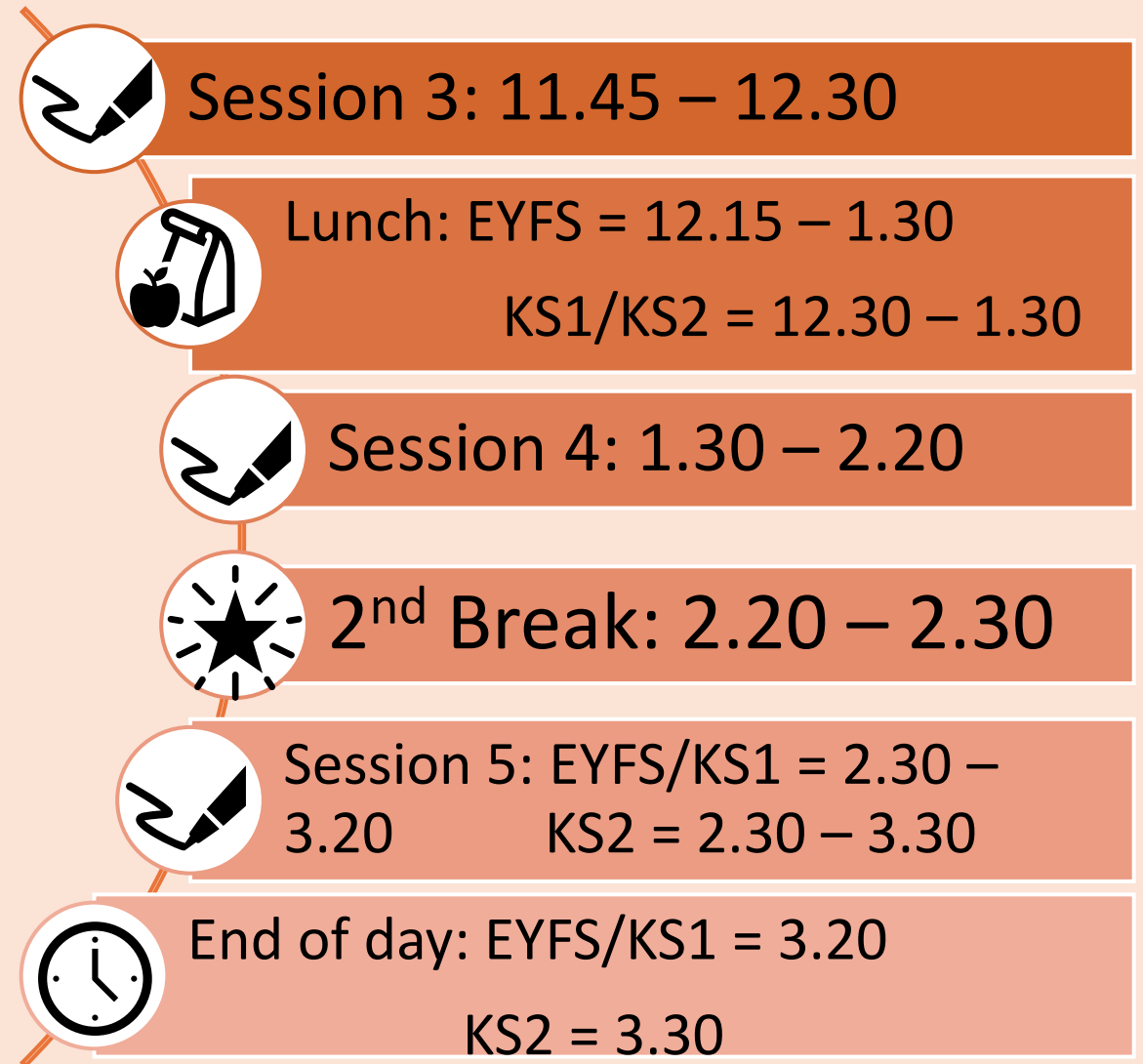
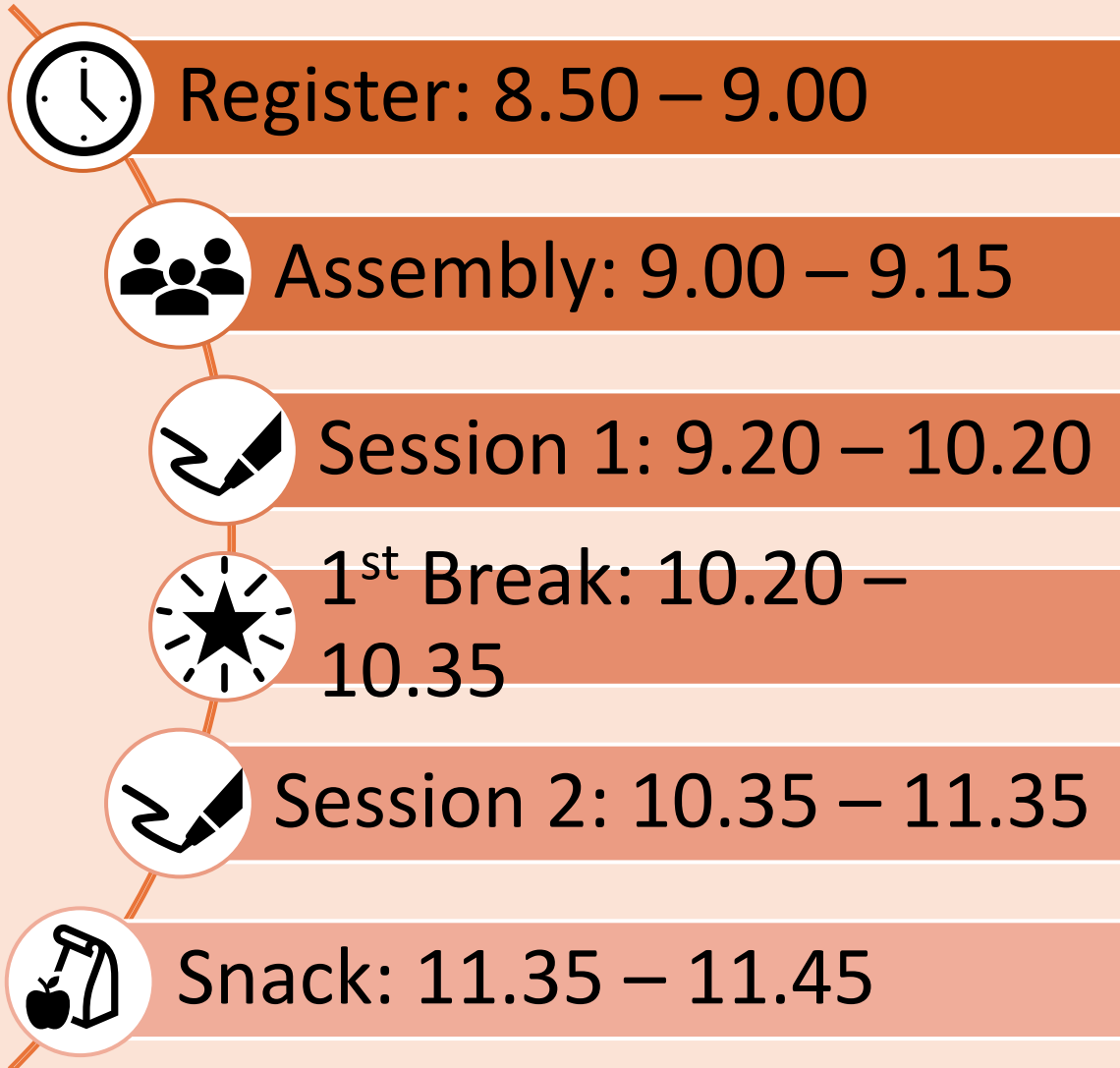


End time: 3:20 (EYFS & KS1)
3.30 (KS2)

Adults in the Playground: Health & Safety Guidelines

1. **Pet Policy:** Please ensure dogs remain off the ground.
2. **Scooter Safety:** Kindly prevent children from riding scooters.
3. **Climbing Frame Restrictions:** The upper playground's climbing frames are off-limits for all children.
4. **Playing Safely:** No ball games or running around
5. **Children should not be left unaccompanied before 8:50am in the playground.** Only independent travelers may stay unaccompanied.

School day



Assemblies:

Monday	Tuesday	Wednesday	Thursday	Friday
Senior Leader Assembly	Singing Assembly	Community (our art inspiration) Play Assembly	Achievement (Be the best you can be) Assembly	Class/Year Assembly

Snacks:

Please make sure that your children have a hearty breakfast as snack isn't until 11:35am.

For Reception, Y1 and Y2 snack is provided by the school so please do not bring one in.

The exception to this is when your child has an afterschool club. In this case, please provide them with either a piece of fruit, vegetable or crackers for them to eat at 3:20pm.



What to bring:

- Yellow bookbag (no rucksacks please, we do not have space).
- Named water bottle.
- Name any jackets or coats and blue PE jumper.
- PE jumper and trainers for our PE days (**Monday and Thursday**)



(Alix)

Year Overview: Curriculum Map



2025-26	Autumn 1	Autumn 2	Spring 1	Spring 2	Summer 1	Summer 2
Subject Lead	History	Science	History	English	History	Geography
Topic Theme	Superheroes	Nocturnal animals	Mexico	The Twits	Great Fire of London	Settlements
Key Texts	Traction Man	Wild	Persuasive texts	The Twits	Recounts	The Storm Whale
English Writing	Character description Newspaper report	Character description Story writing.	Whole School Writing Project. Non-fiction.	Character description	Recount Instructions	Describe a setting Perform a poem
Maths (WRH)	Place Value Adding and subtracting	Adding and subtracting Shape	Money Multiplying and dividing	Length and perimeter Mass and capacity	Fractions Time	Statistics Position and direction
Science	Animals including humans Enquiry: How do we look after our bodies?	Habitats Enquiry: What is a habitat?	Materials Enquiry: What are materials?	Materials Enquiry: How are different materials used?	Plants Enquiry: How do plants grow?	Plants Enquiry: Are plants living things?
History	Enquiry: Were Mary Seacole and Edith Cavell heroes?			Enquiry: How does looking at evidence support our understanding of history?	Enquiry: How did the Great Fire of London influence our lives today?	
Geography		Superheroes Ecosystems	Enquiry: Would you prefer to live in London or Mexico? Why?			Enquiry: How do houses in the seaside and city differ?
RE	<u>Christianity</u> Enquiry: Is it possible to be kind to everyone all the time?	<u>Christianity</u> Enquiry: Why do Christians believe God gave Jesus to the world?	<u>Islam</u> Enquiry: Does praying at regular intervals help a Muslim in their everyday life?	<u>Christianity</u> Enquiry: How important is it to Christians that Jesus came back to life after his Crucifixion?	<u>Islam</u> Enquiry: Does going to a mosque give Muslims a sense of belonging?	<u>Islam</u> Enquiry: Does completing Hajj make a person a better Muslim?
Art	Drawing Painting		Painting Printmaking		Printmaking Collages and textiles	
DT		Structures		Textiles		Food and nutrition
Music	Sing Up: Beat, rhythm and melody.	Sing Up: Beat, rhythm and melody.	Sing Up: Duration and dynamics.	Sing Up: Duration and dynamics.	Sing Up: Beat, pitch and traditional dance.	Sing Up: Beat, pitch and traditional dance.
PHSE	Zones of regulation.	Valuing difference	Keeping safe	Rights and respect	Being my best	
RSE						Growing and changing
Computing	<i>E-safety: How technology makes you feel.</i>	<i>E-Safety: Online bullying</i>	<i>E-safety:</i>	<i>E-safety: Digital footprints and identity</i>	<i>E-Safety: Health, wellbeing and lifestyle.</i>	<i>E-safety: Privacy and security.</i>

Curriculum

Curriculum Maps:

- Visit the school website to find out what units will be covered over the year.
- <https://www.tetherdownschool.org/page/?title=Curriculum+Maps+Y1%2D6&pid=92>

Curriculum Letters:

- Emailed each half term (also available on the school website)
- Contain more detailed information about what will be taught in a particular half term.
- <https://www.tetherdownschool.org/lower-phase-rec-y2>

Highlights of our Curriculum

- We aim to have at least one visit/workshop per half term.
- Letters and any payments, will be sent out in advance via ParentPay.
- We welcome adult help when possible – email sign ups will be sent out via ParentPay.

Projects/Creative opportunities

- DT – food technology and nutrition
- History/DT– Great Fire of ~London, burning houses!
- Plants – growing and observing seeds

Trips and workshops

- Christmas Trip
- Local Church and Synagogue
- Great Fire of London Workshop/Visit the Monument
- Walton-on-the-Naze

Curriculum Topics

- Aut 1: Heroes
- Aut 2: Nocturnal animals
- Spr 1: Mexico
- Spr 2: The Twits
- Sum 1: Great Fire of London
- Sum 2: Settlements

Curriculum Specialists

- Mandarin Teachers - from London Southbank University
- Music - led by Mr Jonathan Kitching
- PE - taught by Coach Sonia Da Silva and Coach Sam Hadari

Challenge in Every Lesson

At our school, we aim high and believe every child can achieve their best. Challenge is part of everyday learning:

- **Stretching Thinking**

Lessons are designed to deepen understanding and build confidence. E.g.

- *Maths*: Children solve challenging problems using reasoning and resilience.
- *English*: Pupils write with creativity and purpose, using inference and creating mood.

- **Varied Activities**

We use different tasks and approaches to suit all learning styles.

- **Growth Mindset**

Mistakes are seen as learning opportunities.

- **Supportive Classrooms**

Children feel safe to take risks and try hard things.

- **‘Aim High’ Days**

Focus on problem solving, teamwork, debates, research, and maths puzzles—developing deeper thinking and curiosity.

End of year expectations

- Reading book band: RWI Comprehension
- Assessments through observations, conversations, books, lessons, half termly and termly testing.
- Teacher records assessments once every term based on their assessments
- This is fed back to parents through parent consultations and reports.
- The school website shows end of year expectations here: [Tetherdown School - End of Year Expectations](#)

What does Year 2 writing look like by the end of the year?

WB 06.05.24

WALT: Write an innovation story.

One bright, sunny day in the desert there was a boy called Bob. He wanted to surprise his friend called Zak. The surprise was four peas, six bananas and twelve mangos. He put the food in the basket and started working throo the soft, yellow sand. w

When he was working for a reelly long time he got tired so he stoped to have a rest under a tree. Out of nowair a cheeky monkey stole the yellow bananas. He did it so quicky that Bob didn't notes.

Later on Bob stoped to have lunch near a catis. Suddenly

a cheeky, spotty cheetah snatched the soft, green peas and ate them.

Aster he was working for a long long time Bob stoped to have a brake. All of a sudden a scary lizard stole the juicy mangos. Bobs basket was now empty!

Later on a grey

rhino crashed into a orange tree. Bobs basket was now full again. Finally Bob arived at Zakes house. When he took his basket down he was surprised. When did this happen? Zak was happy because oranges was his faveot fruit. What a saphrise!

How We Support All Children at Tetherdown: Inclusion, Interventions & SEND Support

- Strong Teaching for Everyone**

All teachers are trained regularly to meet children's different needs, including those with SEND.

- Class Teacher Leads Support**

If your child needs extra help, their class teacher is the first person to support and manage this.

- What Are Monitoring and Learning Plans?**

- Monitoring Plan*: A short-term plan to keep an eye on progress.

- Learning Plan*: A more detailed plan with clear targets if your child needs longer support.

- Extra Help When Needed**

Children may work in small groups or 1:1 for a while, but the aim is always to return to full class learning.

- Getting Expert Advice**

If a child still struggles, we may ask outside specialists to help.

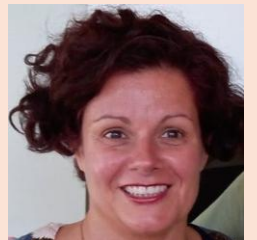
- Keeping Track**

We regularly check progress in meetings to make sure every child is moving forward.

- Who to Talk To**

- Your first point of contact is your **child's class teacher**.

- Ms. McMeakin (Inclusion Lead)** is also available at SEND coffee mornings, Open Door sessions, and parent evenings.



Home Learning on Teams

Home learning is:

- A consolidation of knowledge and skills such as reading, spelling, and Maths.
- Given to children on Thursdays and returned via Teams Assignments on Tuesdays.

The children will receive a home-learning sheet which will explain the week's learning.
Please help your child timetable a time for these activities.

Home learning will include:

- ☐ Daily reading
- ☐ Spellings (20 mins or 5 mins per evening)
- ☐ Maths -TT Rockstars and White Rose Maths (up to 45 mins)
 - ☐ Each sheet has an accompanying video: <https://whiterosemaths.com/homelearning/>

Home Learning on Teams

- We aim to acknowledge and provide regular feedback about your child's work.
- Home learning is followed up in class and the teachers will continue to train and guide the children on how best to use Teams.
- In Year 2 home learning is set on a **Thursday**.
- We will provide a home-learning book for the children to complete their work in and then to take photographs to upload on to teams. If you have an issue with uploading, then please send the work in on the **Tuesday**.
- A few children will have adapted home learning.
- If you are unable to print, please get in touch with your class teacher who can provide a paper copy.
- **Please read our general notices regularly, this will inform you of assemblies, local trips, workshops and may include other messages of importance.**
- **We expect ALL children to complete their home-learning. If your child does not complete their homework on TWO consecutive occasions we will, for those children in Years 4, 5 and 6: provide an opportunity to complete in school, and we will email you to explore why your child has not completed their home**

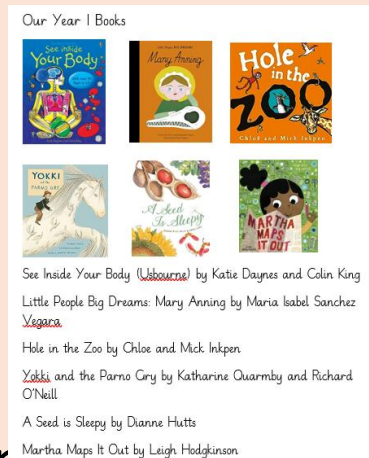
Reading – Home Learning

KS1:

- Children have:
 - Read, Write, Inc book (linked with their phonics)
 - Banded book
- Books will be changed weekly - you must bring the books back in with their Yellow Reading Record **on Fridays**.
- The Yellow Reading Record is for you to record how your child found the reading and if there is anything you want to let us know about the reading. We will read your comments but will not always have capacity to write back.
- Book band colours will be assessed every half term.

Reading Passports

(Audrey)



Reading Passports were created to widen our children's reading with a range of genres, reading level and choice of authors represented.

- Each year group has 8 books for the children to choose 6 and read over the year. These will be in addition to the children's whole class texts and reading books.
- Books are high level, engaging and at or above reading expectations for that year group
- The books include poetry, non-fiction and fiction.
- Outcome: Children will be asked to write a review of the book once read and submit as part of their home learning on Teams. Each time a child has completed a review of the book, the child can ask the teacher to sign this off on their passport.
- All children who complete their passport before the end of the year will

Healthy Pupils

PE days:

- Please come to school in your PE kits on these days: **Mondays and Thursday**

PE Kit: Tetherdown blue t-shirt or a plain blue t-shirt, sweatshirt, shorts or jogging bottoms and trainers or plimsols

- Please note if your child does not have correct PE kit, they will be given a reminder and if they forget their kit again (same half term), they will miss the lesson due to health and safety. (If they have unsuitable clothing e.g. boots, they may miss the immediate lesson.)
- Stevenson's Website to order PE kits <https://www.stevensons.co.uk/> (also available on Tetherdown Website)
- Friends of Tetherdown hold a second-hand PE kit sale throughout the year. (Summer Fayre)

Please remember we are a **no nut school** E.g. **pesto**

- KS1 during day - School provides the snacks
- Please send in a labelled water bottle.
- Packed lunches - all rubbish from children's packed lunch will remain in lunchboxes and returned home so that you can discuss likes/dislikes.

Birthdays:

- Please **do not bring edible birthday treats** due to being 'Healthy School' and children's allergies/intolerances. However, we would welcome a book to add to the library.
- Please choose a book that your child has enjoyed reading or speak to the staff at Muswell Hill Children's Bookshop as they will give excellent recommendations. (Alix)

E-Safety



- Parents and staff are responsible for teaching children the skills to use the internet safely. Please see our 'Keeping Children Safe Policy' for more details.
- No mobile phones or watches with mobile data in school.
- Any photographs taken by parents on school trips must not be shared on any social media sites.
- All parents are asked to give/deny permission for photographs to be shared on our website and in our Newsletter.
- The annual Parent E-safety meeting is planned for November 2025
- Consider joining a national movement called **Smartphone Free Childhood-Haringey** which is urging parents and schools to help delay giving young children smartphones and social media access.

Communication Guidelines

(Alix)

Best Practices for Communicating with Teachers:

- Direct Meetings/Phone Calls: Schedule these for in-depth discussions.
- Emails: Keep messages short and succinct and send them within working hours. Expect a response within 5 working days. Use "schedule send" for late-night or weekend emails.
- End-of-Day Chats: Brief discussions in the playground are welcome

Key Information Sources:

- Website: Visit www.tetherdownschool.org for most queries, supporting our busy office staff.
- Parent Consultations & Annual Reports: Discuss your child's progress.
- Teams: Regular updates on visits and home learning.

Class Champions: Assist with events and community engagement through FoT.

Further Communication

- We have a monthly newsletter, a school website www.tetherdownschool.org and an Instagram page so please follow us on: tetherdownschool

When emailing the office:

- **Please write down the child's full name and class in the subject line**
- Reporting your child's absence/illness/medical appointment or general query admin@tetherdownschool.org
- Any issues around debt or finance please use finance@tetherdownschool.org
- Any issues with Breakfast Club please use breakfastclub@tetherdownschool.org
- Any issues with After School Club please use afterschoolclub@tetherdownschool.org

Class Teacher emails:

- Owls
 - Alix McAlister amcalister@tetherdownschool.org
 -
- Eagles
 - Audrey Clarke aclarke@tetherdownschool.org

Wrap around Care

- Breakfast Club (7:40am – 8:50am) – if you are interested in a place, please email: breakfastclub@tetherdownschool.org Ad hoc bookings are available with at least 24 hours' notice and require confirmation.
- After School Club (M-Th 3:30pm – 6:00pm, F 3:30pm – 5:00pm) - if you are interested in a place, please email: afterschoolclub@tetherdownschool.org Ad hoc bookings are available with at least 24 hours' notice and require confirmation.
- Other available clubs run by both internal and external providers:
- Before School: 8:00am - 8:30am (Choir); 8:20am - 9:10am (Orchestra)
- Lunchtime: 12:30 noon -1:30pm daily (eg Street Dance, Chess, French, Stitch, Debutots)
- After school: 3:30pm - 4:30pm daily (eg Sports with Coaches Da Silva and Hamidi, Jazz, Welly Time, Lego, Karate, Art, Netball, Tennis, Drama, Ballet, Cookery and Gymnastics)
- Please refer to the school website for detailed information: www.tetherdownschool.org/clubs-and-activity-camps

Thank you

As always - we thank you for your continued support as we embark
on
another exciting year, where we have the highest expectations for
your children to excel in all they do here at Tetherdown.

Where *happy* children
are *inspired* to be
the *best* they can be.